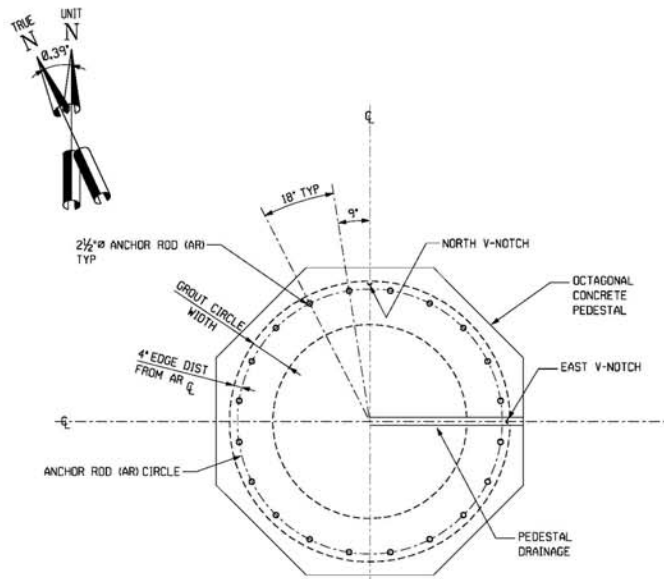
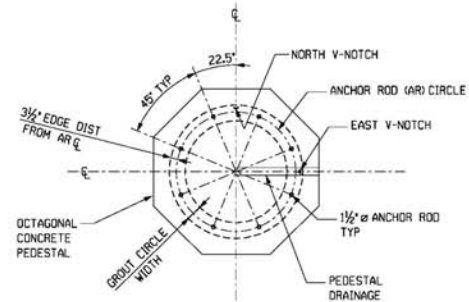


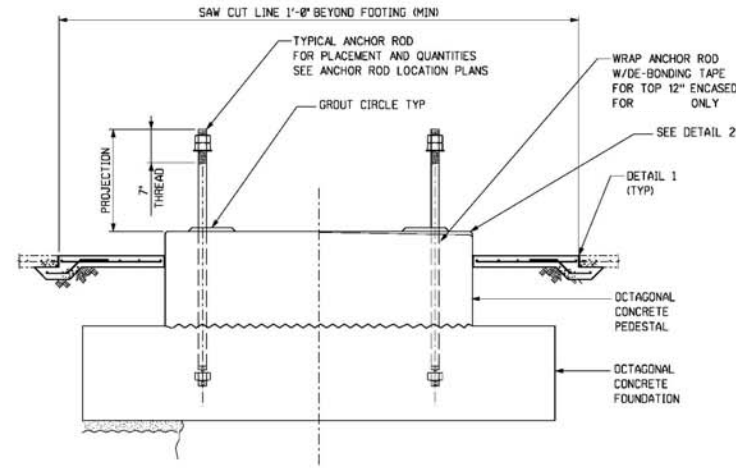
[illegible]



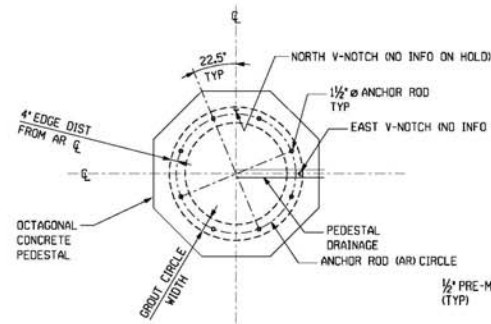
ANCHOR ROD LOCATION PLAN  
VESSEL NO.  
SCALE: NTS



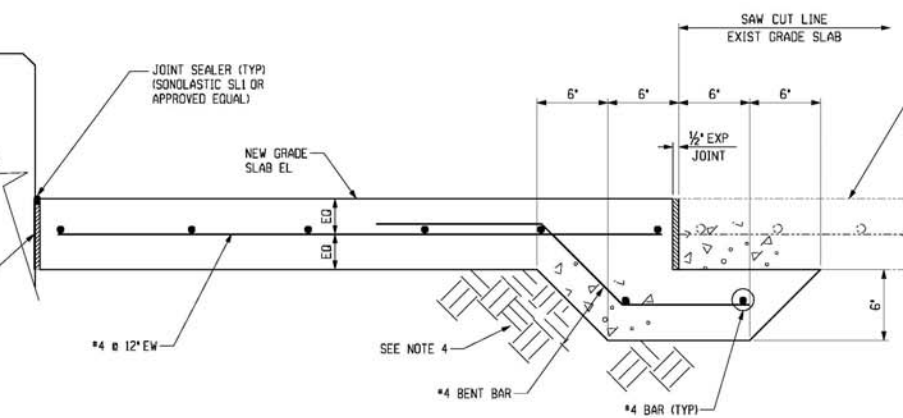
ANCHOR ROD LOCATION PLAN  
VESSEL NO.  
SCALE: NTS



ANCHOR ROD LOCATION ELEVATION  
SCALE: NTS



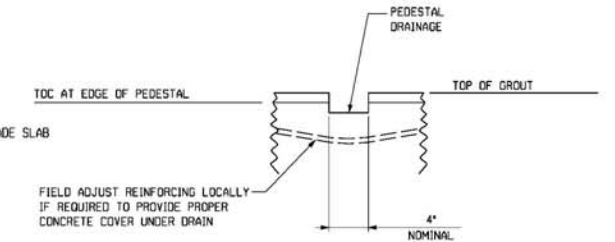
ANCHOR ROD LOCATION PLAN  
VESSEL NO.  
SCALE: NTS



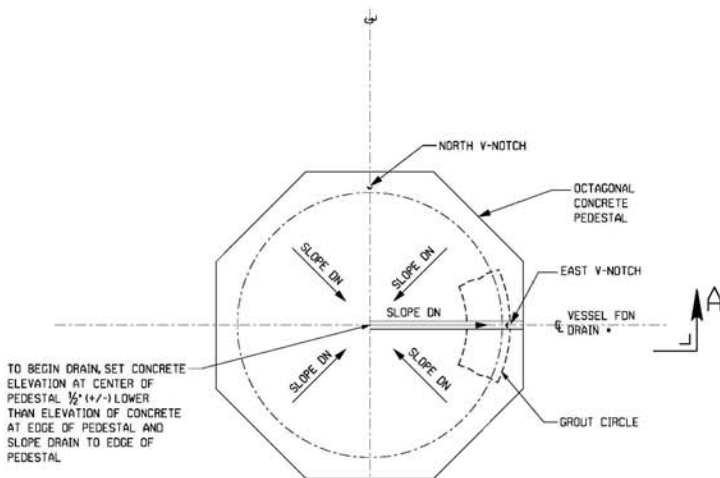
DETAIL 1  
SCALE: NTS

- NOTES:
1. FOR ALL NOTES REFER TO DRAWING
  2. WORK THIS DRAWING WITH DRAWING
  3. ALL ANCHOR RODS SHALL BE ACCURATELY LOCATED AND SECURELY HELD IN PLACE SO THAT NO MOVEMENT OCCURS DURING CONCRETE PLACEMENT.
  4. BACKFILL AND COMPACT AROUND FOUNDATIONS WITH SUITABLE MATERIAL IN ACCORDANCE WITH PROJECT SPECIFICATION, PRIOR TO INSTALLING NEW GRADE SLAB TO MATCH EXISTING GRADE SLAB.
  5. THE CONCRETE IS TO BE AT IT'S MINIMUM 28 DAY STRENGTH PRIOR TO ANCHOR PRE-LOAD.
  6. ANCHORS TO BE TIGHTENED IN A CRISSCROSS PATTERN, IN TWO STAGES  
FIRST STAGE:  
APPLY 50% OF THE FULL PRE-TENSION LOAD TO ALL RODS.  
SECOND STAGE:  
APPLY THE FULL PRE-TENSION LOAD TO ALL RODS.
  7. ALL ANCHOR RODS ARE TO BE RE-TENSIONED SEVEN (7) TO TEN (10) DAYS AFTER THE INITIAL FULL PRE-TENSIONING, (AS PER THE SECOND STAGE IN NOTE 6), AND THEN LOCKED OFF WITH A SECOND NUT.

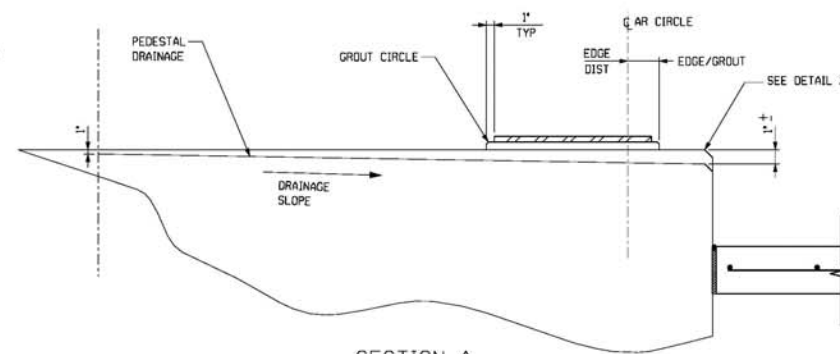
REFERENCE DRAWINGS:



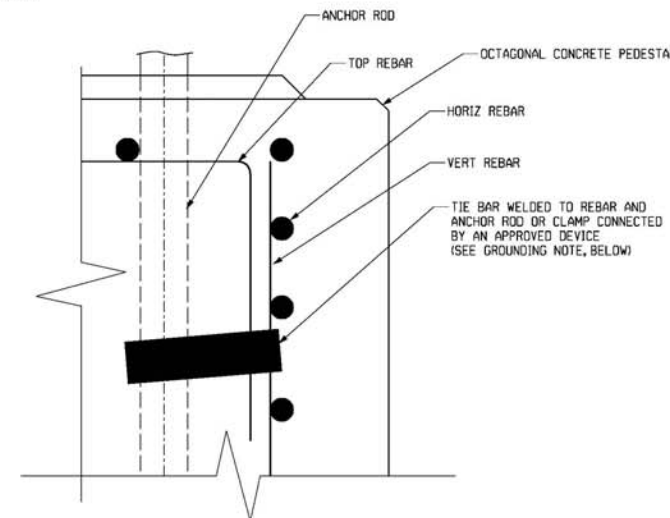
DETAIL 2  
SCALE: NTS



OCTAGONAL PEDESTAL DRAIN PLAN  
SCALE: NTS



SECTION A  
SCALE: NTS



TIE BAR GROUNDING DETAIL  
(SECTION 8-B, 5-2-L-42001-A-I)  
SCALE: NTS

GROUNDING NOTE:

TIE BAR SHALL CONSIST OF REBAR GREATER THAN 1/2" IN DIAMETER, ONE END WELDED TO THE CAGE AND THE OTHER WELDED TO THE ANCHOR ROD. THE CAGE SHALL HAVE A MINIMUM 2" CONCRETE COVERING. THE ANCHOR ROD SHALL BE STAMPED WITH A G ON TOP TO IDENTIFY THE GROUND. PROVIDE TWO TIE BARS 180 DEGREES APART.

VESSEL NO	VESSEL ANCHOR ROD SCHEDULE										
	ROD DIAMETER	ROD TYPE (ASTM)	QUANTITY	ANCHOR ROD CIRCLE	TOTAL LENGTH	PROJECTION LENGTH	PRE-LOAD (SEE NOTES 5 TO 7)		V-KNOTCH COORDINATES		GROUT CIRCLE WIDTH
							TORQUE (Ft LBS)	AXIAL FORCE (LBS) (FOR INFO ONLY)	NORTH V-KNOTCH	EAST V-KNOTCH	
	2½"	F1554, GR.55 GALVANIZED (8 THREAD SERIES)	20	11'-2½'	8'-0"	1'-11"	1500	36000	E' N1	E' N1	22"
	1½"		8	5'-0¾"	7'-0"	1'-6"	260	10400	E' N1	E' N1	10"
	1½"		8	6'-8"	6'-0"	7"	210	8400	HOLD FOR MORE INFO	HOLD FOR MORE INFO	11¼"